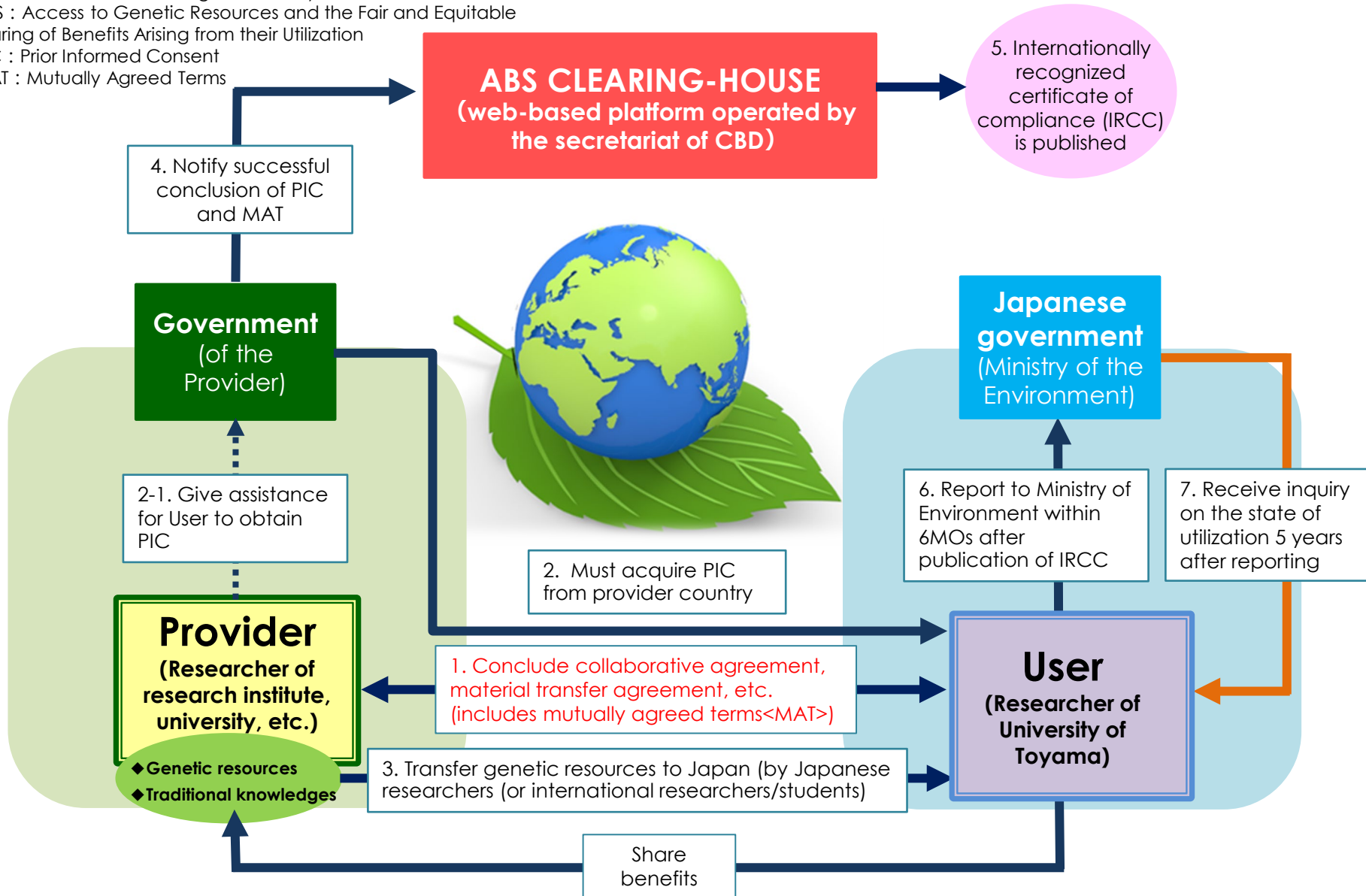


Nagoya Protocol and ABS Guidelines

- * CBD: Convention on Biological Diversity
- * ABS : Access to Genetic Resources and the Fair and Equitable Sharing of Benefits Arising from their Utilization
- * PIC : Prior Informed Consent
- * MAT : Mutually Agreed Terms



*PIC is not required when Japan provides genetic resources.